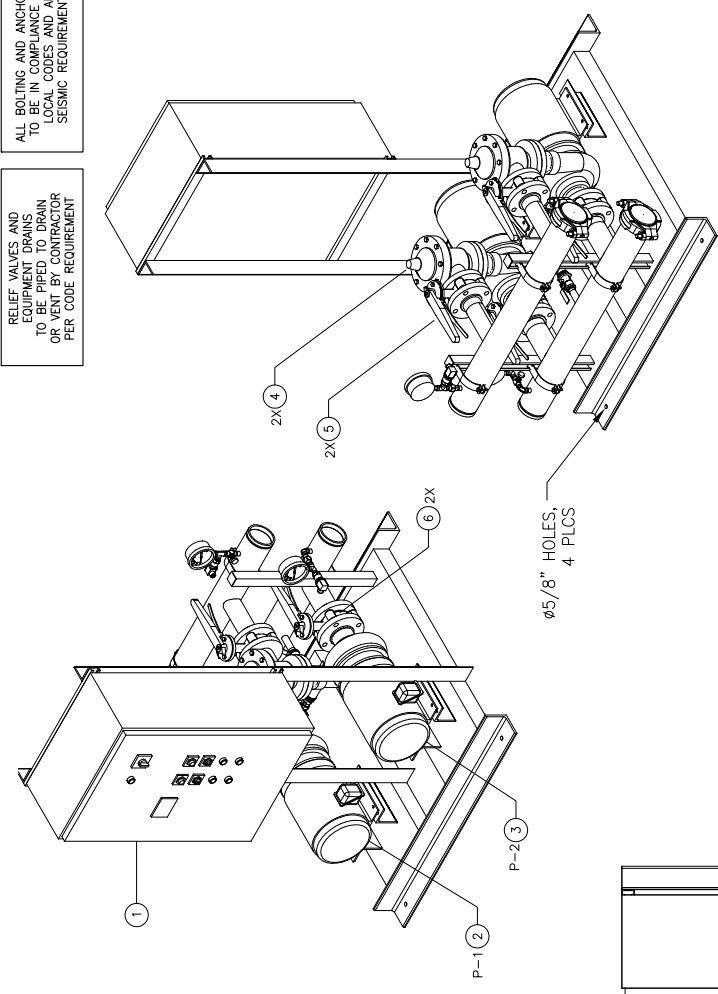
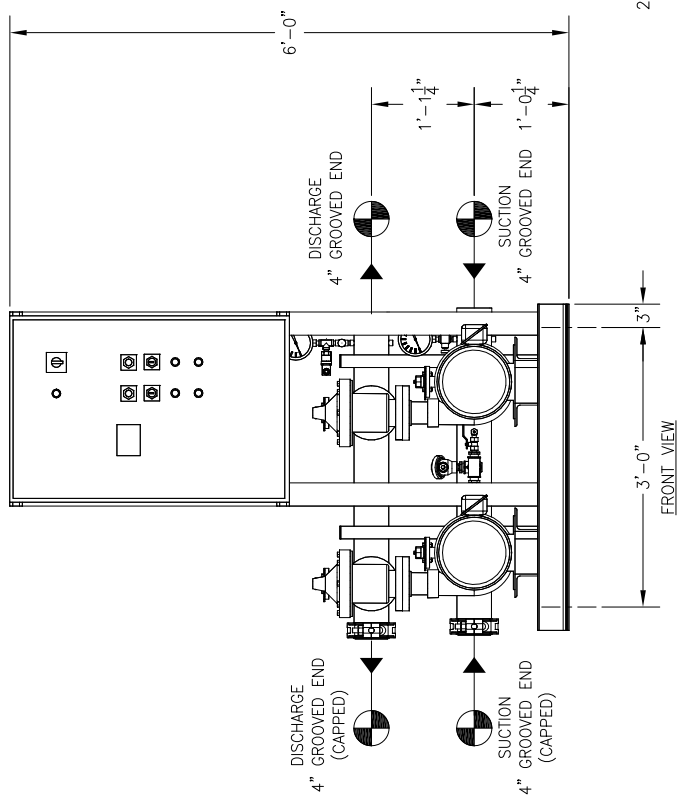


TOP VIEW



RELIEF VALVES AND EQUIPMENT DRAINS TO BE PIPED TO DRAIN OR TO THE STREET PER CODE REQUIREMENT.

ALL BOLTING AND ANCHORAGE TO BE IN COMPLIANCE WITH LOCAL CODES AND ANY SEISMIC REQUIREMENTS.

TOTAL FLOW		TOTAL DISCHARGE PRESSURE		TOTAL SYSTEM CAPACITY		AVAILABLE PRESSURE				
GPM	PSI	GPM	PSI	GPM	PSI	GPM	PSI			
3	P-2	3656	2.5 X 3 - 7	-	7 1/2	3500	460 / 60 / 3	TEFC P.E.		
2	P-1	3656	2.5 X 3 - 7	-	7 1/2	3500	460 / 60 / 3	TEFC P.E.		
ITEM	TAG	MANUFACTURER	SERIES	MODEL	GPM	TDH	HP	RPM	VOLTS/Hz/PH	ENCLOSURE
PUMP SCHEDULE										

FLOWTHERM systems
HAYWARD, CALIFORNIA

PROJECT NAME:
CUSTOMER:
DRAWN BY DATE: 05/18/16
CHECKED BY APPROVED BY:
TOLERANCES UNLESS OTHERWISE SPECIFIED
DEC. .500" 1/2" 5" 1" = 1'-0"

DRAWING TITLE: VARIABLE SPEED DUPLEX PRESSURE BOOSTER
FAB No. DRAWING No. REV
FEV2-14 A

THE DRAWING AND THE INFORMATION DEPICTED THEREIN IS THE PROPERTY OF FLOWTHERM SYSTEMS, A DIVISION OF CHC. COPIES ARE MADE FOR THE CONVEYANCE AND NOT FOR THE BASIS FOR MANUFACTURING OR SALE OF THE PRODUCT WITHOUT PRIOR WRITTEN PERMISSION OF CHC.

UL LISTED
PACKAGED PUMPING SYSTEMS & HEAT TRANSFER SYSTEMS

APPROXIMATE SHIPPING WEIGHT: 1,170 LBS.
APPROXIMATE OPERATING WEIGHT: 1,235 LBS.

GENERAL NOTES:
(1) SINGLE POINT POWER CONNECTION AT CONTROL PANEL.
(2) HYDRO PRESSURE CHECK AT 125 PSI.
(3) ASSEMBLED SYSTEM TO BE PAINTED WITH INDUSTRIAL MACHINE ENAMEL PRIOR TO SHIPMENT.

= DENOTES CONTRACTOR POINT OF CONNECTION