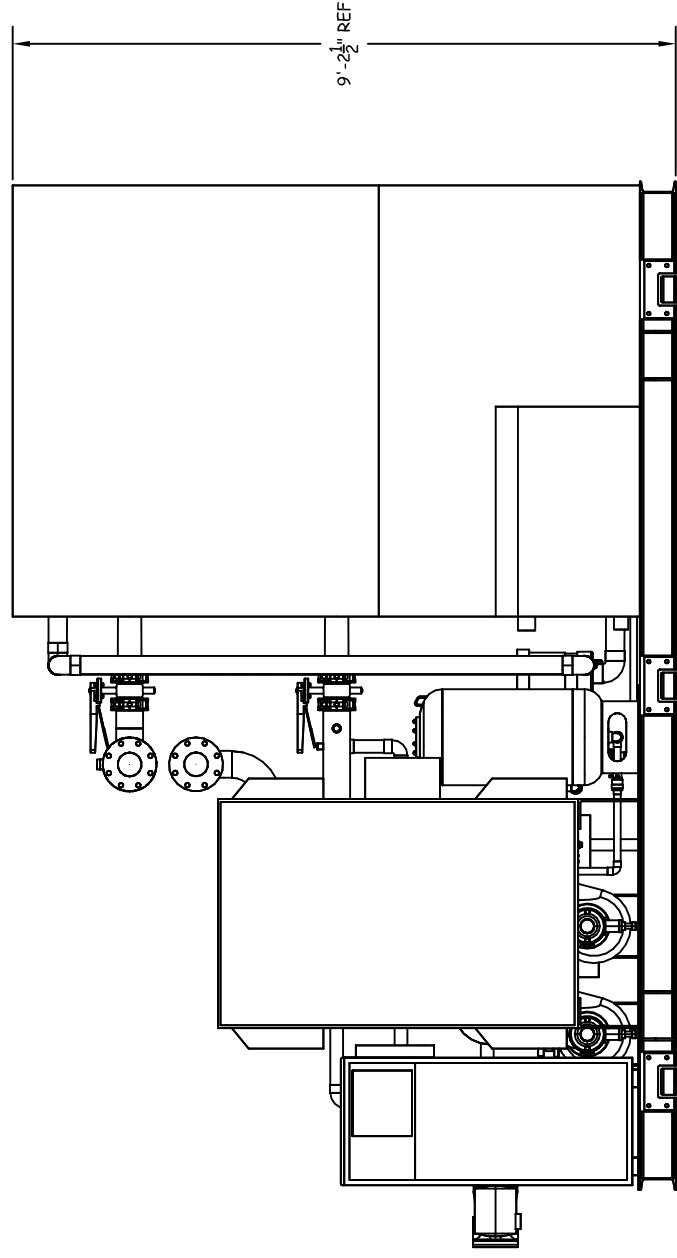
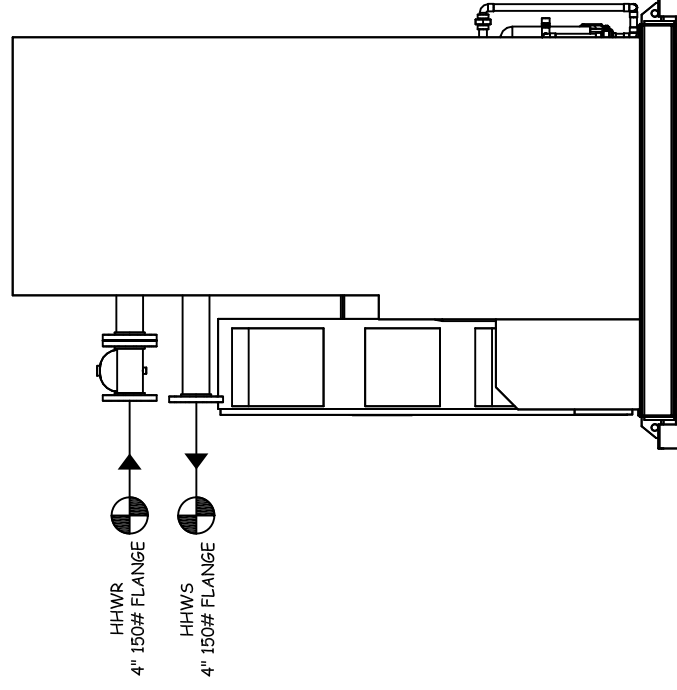
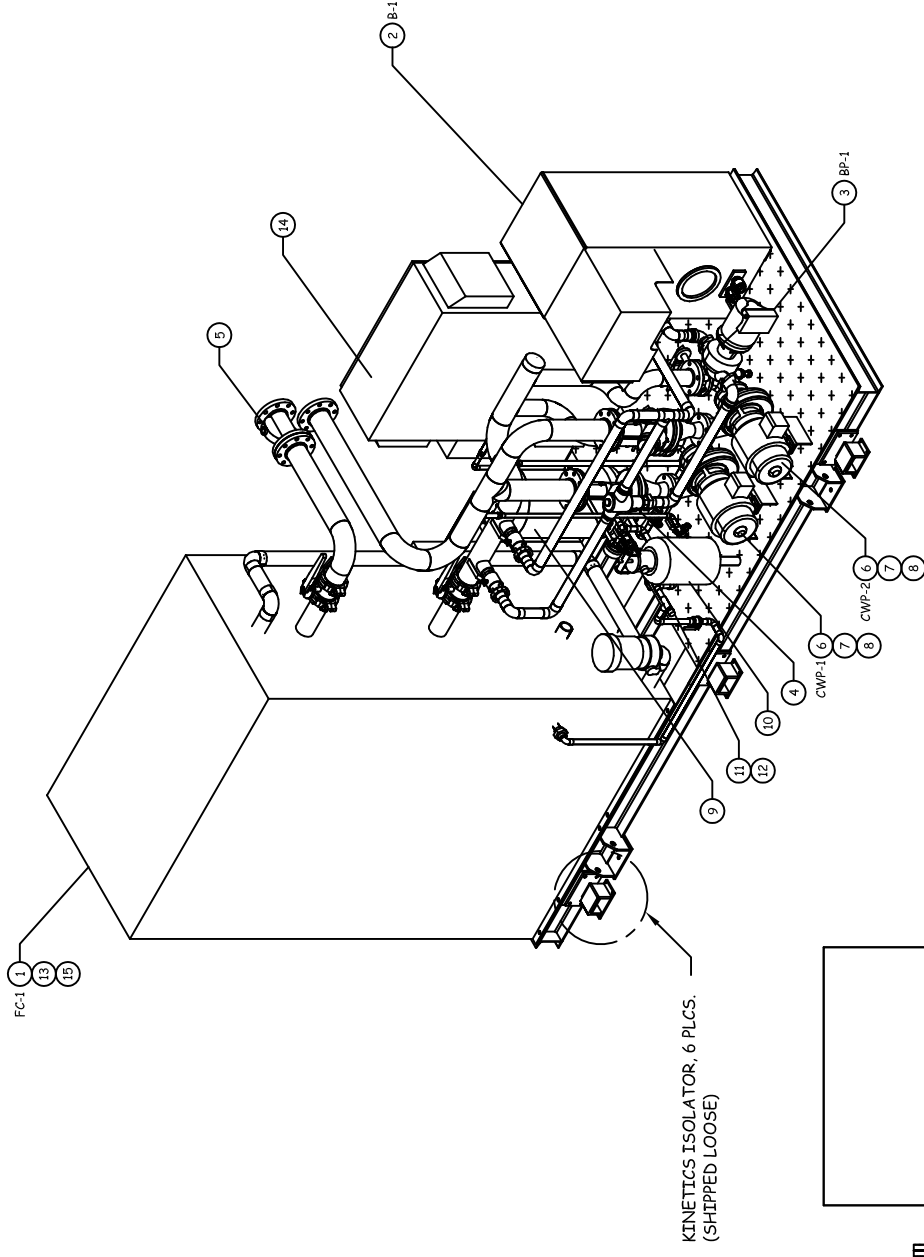


TOP VIEW



FRONT VIEW



RIGHT END VIEW

DESIGN NOTES:

- (1) COMPLETE SYSTEM TO BE HYDRO TESTED TO 125 PSI PRIOR TO SHIPPING.
- (2) STEEL FRAME AND COMPONENTS TO RECEIVE TWO COATS OF GRAY MACHINE ENAMEL.
- (3) ALL WELDED WATER PIPING TO BE WELDED IN ACCORDANCE TO ASME B31.9
- (4) COMPLETE PACKAGE SYSTEM TO BE UL LISTED.

⊕ = DENOTES CONTRACTOR POINT OF CONNECTION

REV	DESCRIPTION	BY	DATE	APPROXIMATE SHIPPING WEIGHT: LBS.	APPROXIMATE OPERATING WEIGHT: LBS.



**LISTED**  
 PACKAGED PUMPING SYSTEMS  
 &  
 HEAT TRANSFER SYSTEMS

THIS DRAWING AND THE INFORMATION CONTAINED HEREIN ARE THE PROPERTY OF FLOWTHERM SYSTEMS, A DIVISION OF CALIFORNIA HYDRONICS CORP. COPIES ARE ISSUED IN STRICT CONFIDENCE AND SHALL NOT BE REPRODUCED OR COPIED, OR USED AS THE BASIS FOR THE MANUFACTURING OR SALE OF PRODUCT WITHOUT PRIOR WRITTEN PERMISSION OF CALIFORNIA-HYDRONICS CORP.



JOB NAME:  
 CONTRACTOR:

DRWN.	DATE	CKD.	APPROVED
TOLERANCES UNLESS OTHERWISE SPECIFIED	DEC.	FRACTION	ANGLE
.500"	1/2"	5°	D
SIZE	SCALE		



DRAWING TITLE:  
**WATER SOURCE HEAT PUMP PACKAGE**

FAB No. \_\_\_\_\_  
 DRAWING No. \_\_\_\_\_  
 REV \_\_\_\_\_