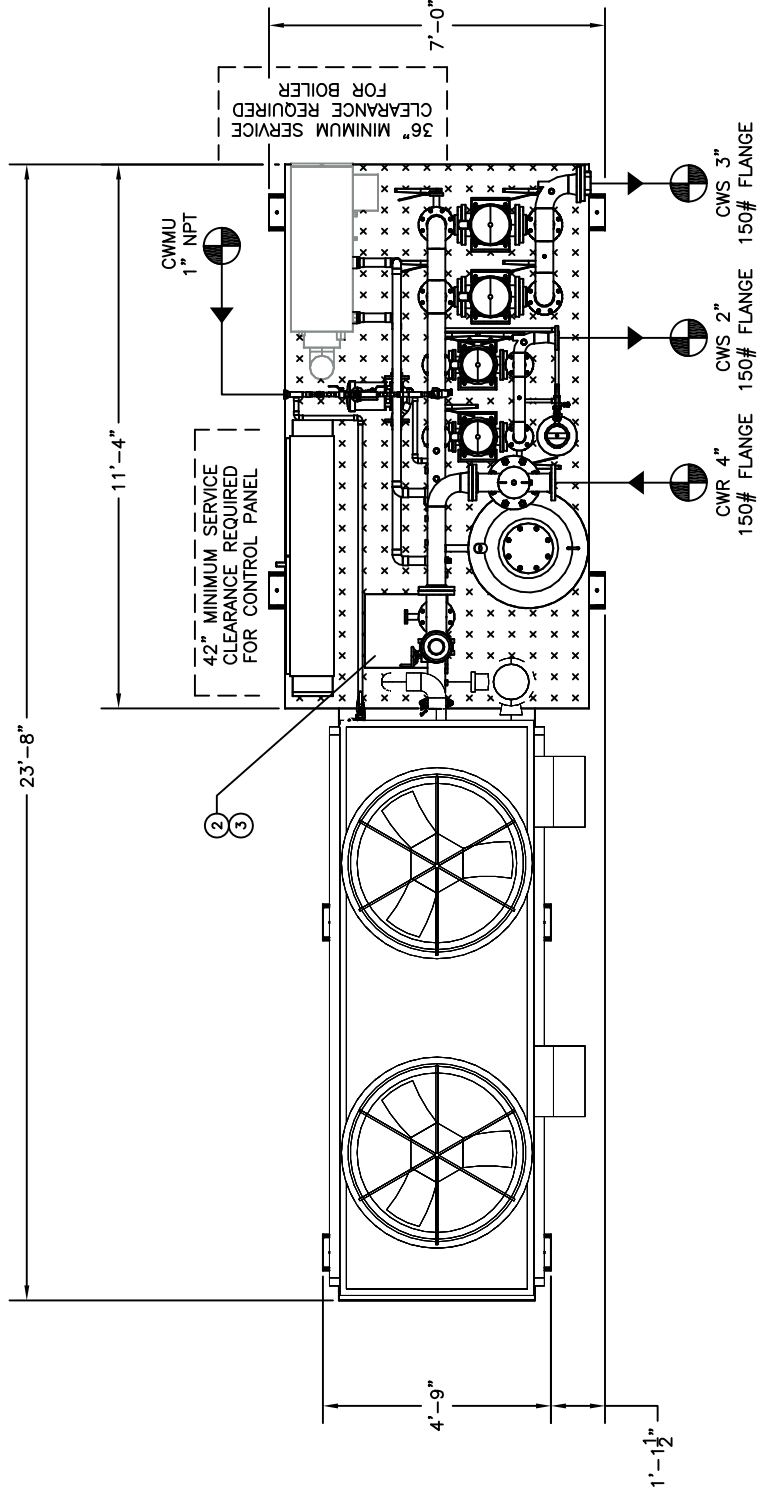
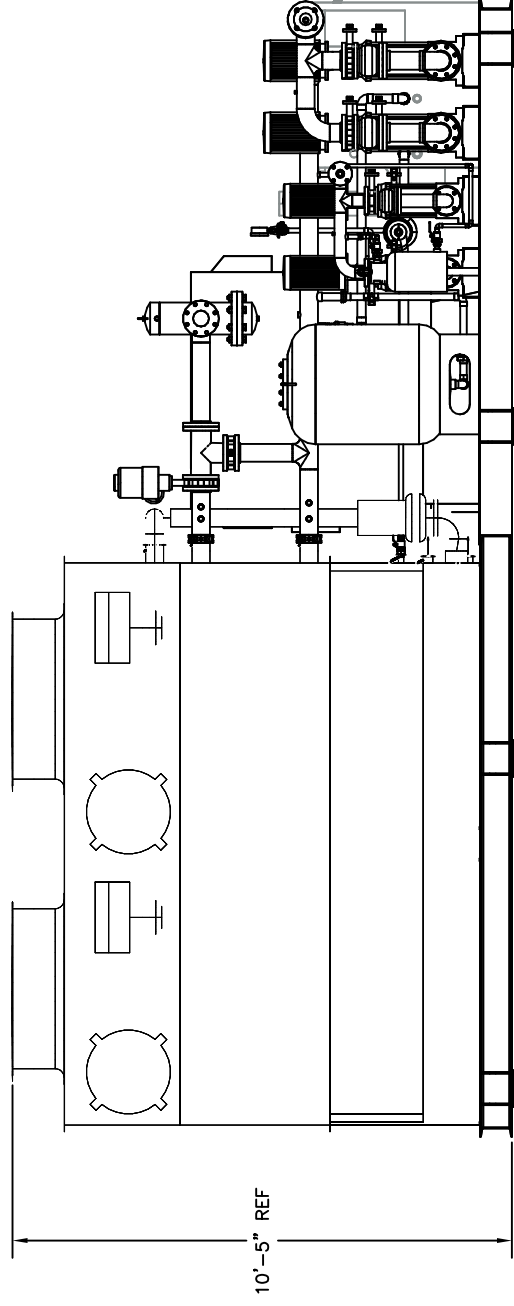


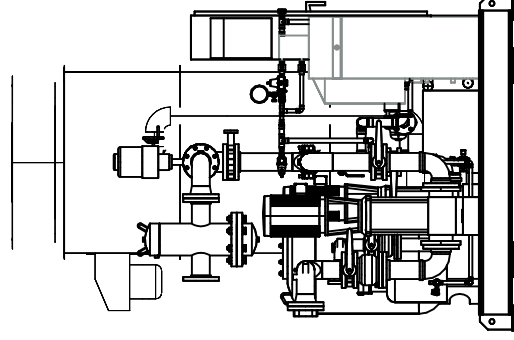
ANCHOR/LIFTING CHAIRS,
8 PLCS.



TOP VIEW



FRONT VIEW



RIGHT VIEW

DESIGN NOTES:

- (1) COMPLETE SYSTEM TO BE HYDRO TESTED TO 125 PSI PRIOR TO SHIPPING.
- (2) STEEL FRAME AND COMPONENTS TO RECEIVE TWO COATS OF GRAY MACHINE ENAMEL.
- (3) ALL WELDED WATER PIPING TO BE WELDED IN ACCORDANCE TO ASME B31.9
- (4) COMPLETE PACKAGE SYSTEM TO BE UL LISTED.

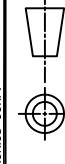
☉ = DENOTES CONTRACTOR POINT OF CONNECTION



LISTED
PACKAGED PUMPING SYSTEMS
&
HEAT TRANSFER SYSTEMS

APPROXIMATE SHIPPING WEIGHT: - LBS.
APPROXIMATE OPERATING WEIGHT: - LBS.

THIS DRAWING AND THE INFORMATION OF DESIGN THEREIN IS THE PROPERTY OF FLOWTHERM SYSTEMS, A DIVISION OF CALIFORNIA HYDRONICS CORP. COPIES ARE ISSUED IN STRICT CONFIDENCE AND SHALL NOT BE REPRODUCED OR COPIED, OR USED FOR ANY OTHER PROJECT, WITHOUT THE WRITTEN PERMISSION OF CALIFORNIA HYDRONICS CORP.



JOB NAME:
CONTRACTOR:

DRWN.	DATE	CKD.	APPROVED
TOLERANCES UNLESS OTHERWISE SPECIFIED			
DEC.	FRACTION	ANGLE	SCALE
.500"	1/2"	5'	D



DRAWING TITLE: WATER SOURCE HEAT PUMP PACKAGE
FAB No. -
DRAWING No. -
REV -

REV	DESCRIPTION	BY	DATE
-	-	-	-