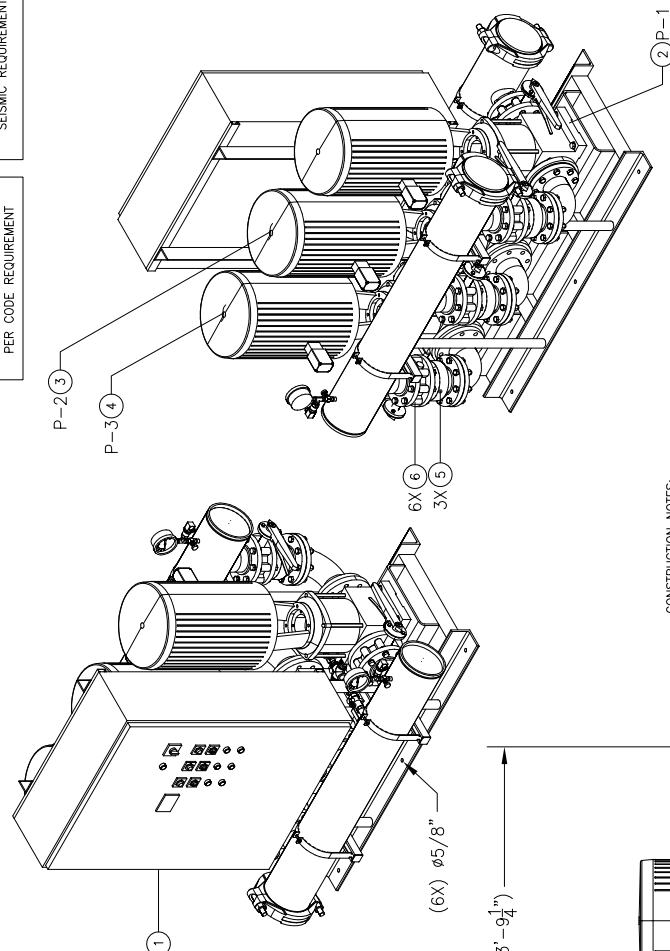


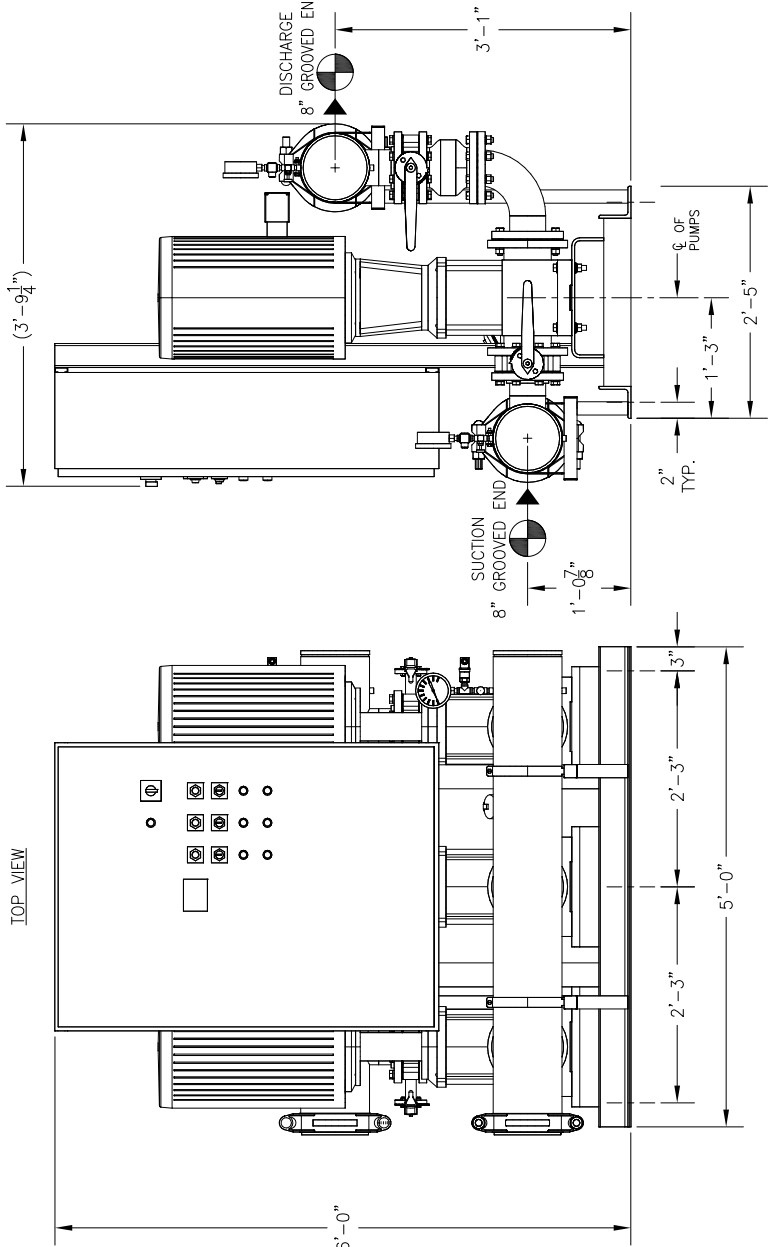
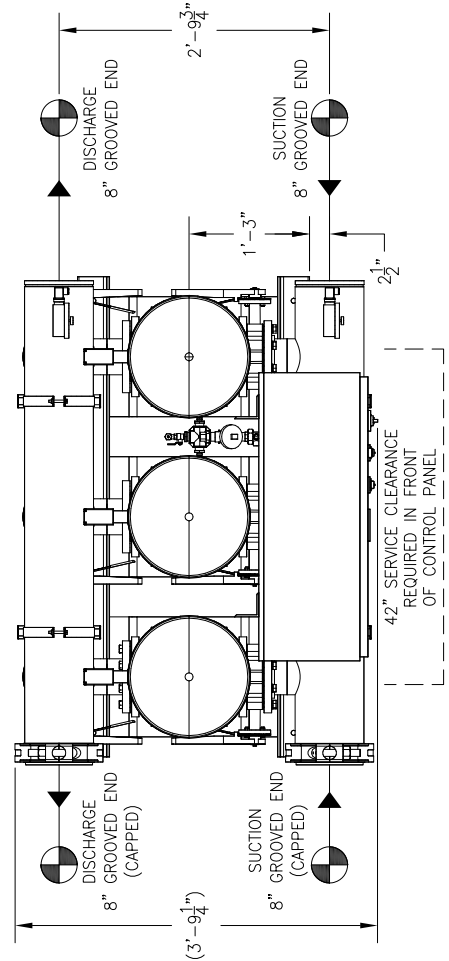
RELIEF VALVES AND ANCHORAGE TO BE IN COMPLIANCE WITH LOCAL CODES AND ANY SEISMIC REQUIREMENTS.

RELIEF VALVES AND EQUIPMENT DRAINS TO BE PIPED TO DRAIN OR VENT BY CONTRACTOR PER CODE REQUIREMENT.



CONSTRUCTION NOTES:
 1. SUCTION AND DISCHARGE HEADERS ARE GROOVED ON BOTH ENDS.
 2. END CAPS CAN BE PLACED ON EITHER END OF HEADERS.
 3. SYSTEM DESIGNED FOR INDOOR INSTALLATION.

-GPM		-PSI		-PSI					
TOTAL FLOW		TOTAL DISCHARGE PRESSURE		AVAILABLE PRESSURE					
TOTAL SYSTEM CAPACITY									
4	P-3	GOULDS	66SVG-2	-	25				
3	P-2	GOULDS	66SVG-2	-	25				
2	P-1	GOULDS	66SVG-2	-	25				
ITEM	TAG	MANUFACTURER	SERIES	MODEL	TDH	HP	RPM	VOLTS/PH	ENCLOSURE
PUMP SCHEDULE									
10	-	-	-	-	-	-	-	-	-
9	-	-	-	-	-	-	-	-	-
8	-	-	-	-	-	-	-	-	-
7	-	-	-	-	-	-	-	-	-
6	6	-	-	LUG TYPE BUTTERFLY VALVE	-	4"	-	-	-
5	3	-	-	VAL-MATIC GLOBE CHECK VALVE	-	4"	-	-	-
4	1	P-3	GOULDS	ESV MULTISTAGE PUMP MODEL	66SVG-2	-	-	-	-
3	1	P-2	GOULDS	ESV MULTISTAGE PUMP MODEL	66SVG-2	-	-	-	-
2	1	P-1	GOULDS	ESV MULTISTAGE PUMP MODEL	66SVG-2	-	-	-	-
1	1	-	-	AQUALOGIC XL CONTROL PANEL	-	-	-	-	-
ITEM	QTY	TAG	DESCRIPTION						



RIGHT END VIEW

FRONT VIEW

GENERAL NOTES:
 (1) SINGLE POINT POWER CONNECTION AT CONTROL PANEL.
 (2) HYDRO PRESSURE CHECK AT 125 PSI.
 (3) ASSEMBLED SYSTEM TO BE PAINTED WITH INDUSTRIAL MACHINE ENAMEL PRIOR TO SHIPMENT.

UL LISTED
 PACKAGED PUMPING SYSTEMS & HEAT TRANSFER SYSTEMS

APPROXIMATE SHIPPING WEIGHT: 3,386 LBS.
 APPROXIMATE OPERATING WEIGHT: 3,707 LBS.

PROJECT NAME:
 -

CUSTOMER:
 -

DRAWN BY DATE: 04/04/18
ACD

CHECKED BY APPROVED BY:
 -

TOLERANCES UNLESS OTHERWISE SPECIFIED:
 DEC. .500"
 FRACTION 1/2"
 ANGLE 5"
 SCALE 1" = 1'-0"

DRAWING TITLE:
 FMV3.1-19-XL - VARIABLE SPEED TRIPLEX PRESSURE BOOSTER

FAB NO.: -
DRAWING NO.: FMV3.1-19-XL

REV
 1

FLOWTECH systems
 HAYWARD, CALIFORNIA

EQUIPMENT SCHEDULE