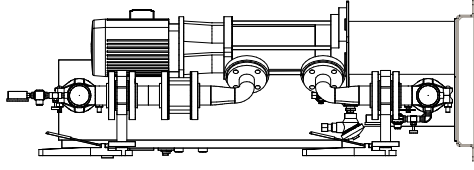
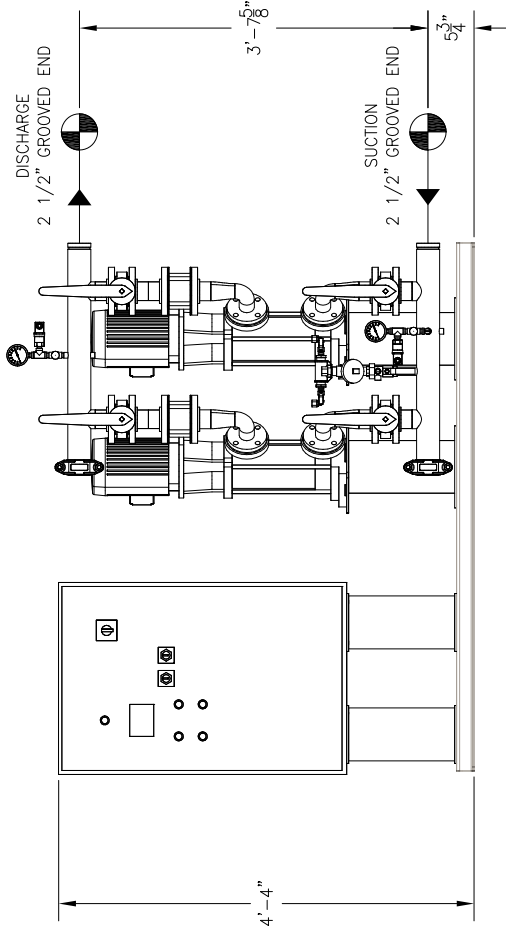
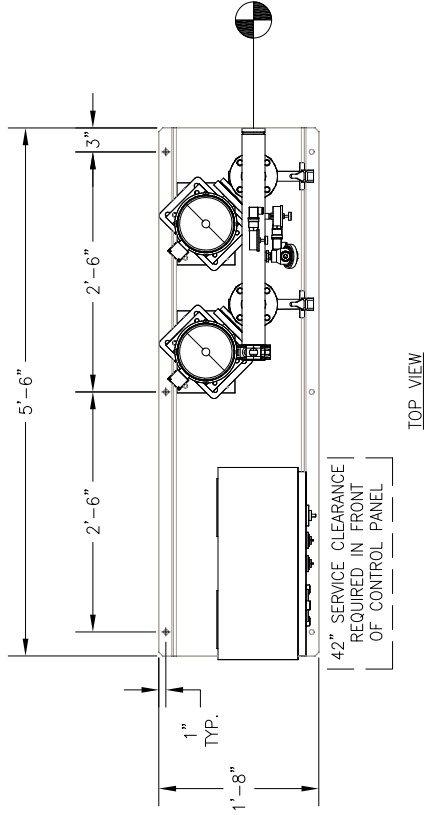
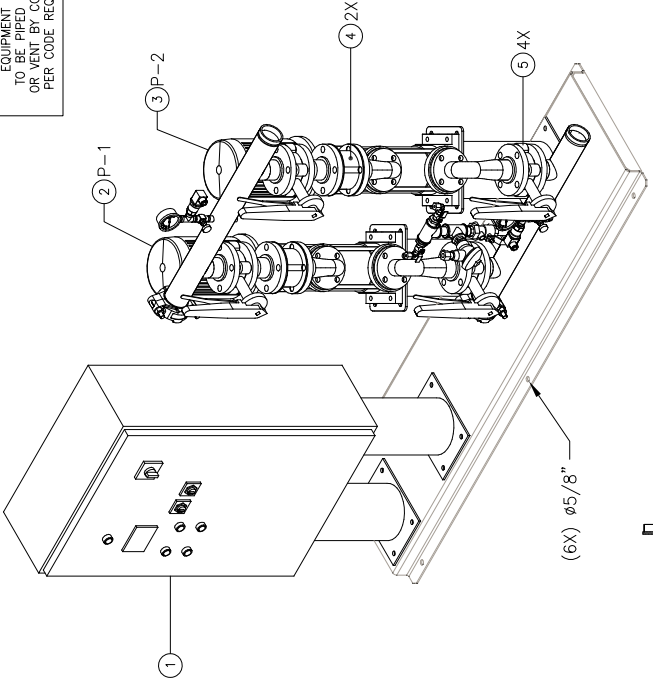


RELIEF VALVES AND ANCHORAGE EQUIPMENT DRAINS TO BE IN COMPLIANCE WITH LOCAL CODES AND ANY SEISMIC REQUIREMENTS.

RELIEF VALVES AND ANCHORAGE EQUIPMENT DRAINS TO BE IN COMPLIANCE WITH LOCAL CODES AND ANY SEISMIC REQUIREMENTS.



CONSTRUCTION NOTES:
 1. SUCTION AND DISCHARGE HEADERS ARE GROOVED ON BOTH ENDS.
 2. SYSTEM DESIGNED FOR INDOOR INSTALLATION.

TOTAL FLOW		- GPM		- PSI		- PSI		- PSI		
TOTAL DISCHARGE PRESSURE		TOTAL SYSTEM CAPACITY		AVAILABLE PRESSURE		AVAILABLE PRESSURE		AVAILABLE PRESSURE		
3	P-2	GOULDS	ESV	55VR-10	-	-	3	3500	460 / 60 / 3	TEFC P.E.
2	P-1	GOULDS	ESV	55VR-10	-	-	3	3500	460 / 60 / 3	TEFC P.E.
ITEM	TAG	MANUFACTURER	SERIES	MODEL	GPM	TDH	HP	RPM	VOLTS/AHZ/PH	ENCLOSURE
PUMP SCHEDULE										
10	-	-	-	-	-	-	-	-	-	-
9	-	-	-	-	-	-	-	-	-	-
8	-	-	-	-	-	-	-	-	-	-
7	-	-	-	-	-	-	-	-	-	-
6	-	-	-	-	-	-	-	-	-	-
5	4	-	-	-	-	-	-	-	-	LUG TYPE BUTTERFLY VALVE - 2"
4	2	-	-	-	-	-	-	-	-	VAL-MATIC WAFER CHECK VALVE - 2"
3	1	P-2	GOULDS	ESV MULTI-STAGE PUMP	MODEL 55VR-10	-	-	-	-	-
2	1	P-1	GOULDS	ESV MULTI-STAGE PUMP	MODEL 55VR-10	-	-	-	-	-
1	1	-	-	-	-	-	-	-	-	VARIABLE SPEED PUMP CONTROL PANEL
ITEM	QTY	TAG	DESCRIPTION							

GENERAL NOTES:
 (1) SINGLE POINT POWER CONNECTION AT CONTROL PANEL.
 (2) HYDRO PRESSURE CHECK AT 125 PSI.
 (3) ASSEMBLED SYSTEM TO BE PAINTED WITH INDUSTRIAL MACHINE ENAMEL PRIOR TO SHIPMENT.

UL LISTED
 PACKAGED PUMPING SYSTEMS & HEAT TRANSFER SYSTEMS

APPROXIMATE SHIPPING WEIGHT: 651 LBS.
 APPROXIMATE OPERATING WEIGHT: 671 LBS.

PROJECT NAME:
 CUSTOMER:
 DRAWN BY DATE: 07/05/16
 CHECKED BY APPROVED BY:
 TOLERANCES UNLESS OTHERWISE SPECIFIED
 DEC. FRACTION: 1/2"
 ANGLE: 5°
 SCALE: 1" = 1'-0"

FLOWTECH systems
 HAYWARD, CALIFORNIA

VARIABLE SPEED DUPLEX PRESSURE BOOSTER
 DRAWING NO. FWZ-25L
 REV. A