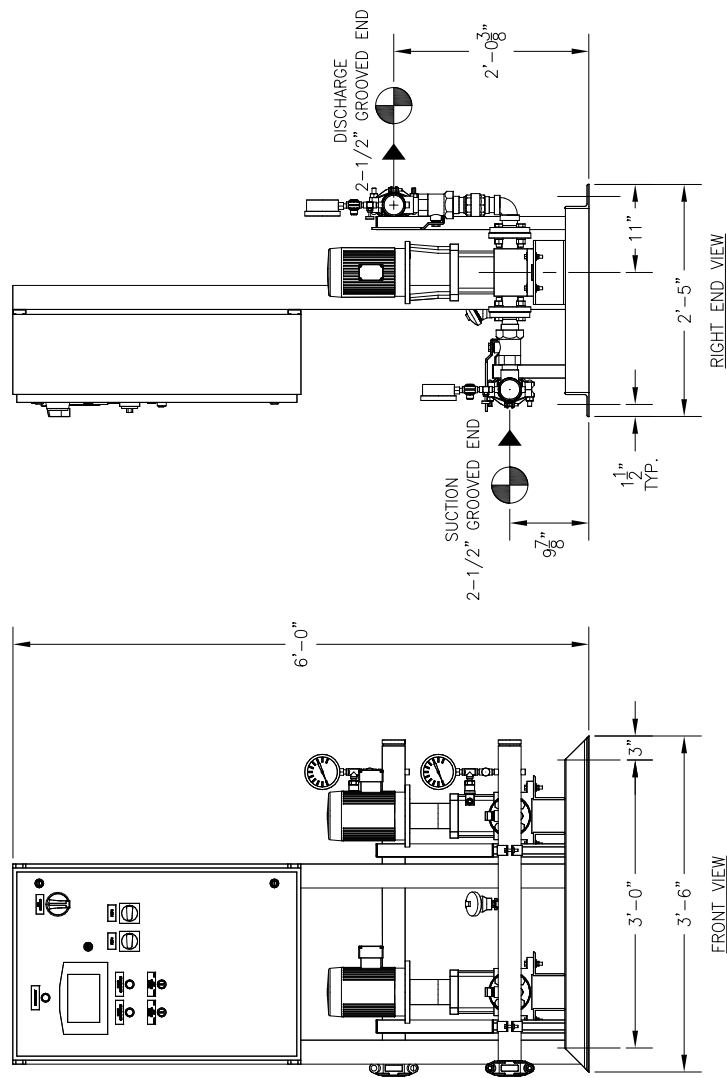
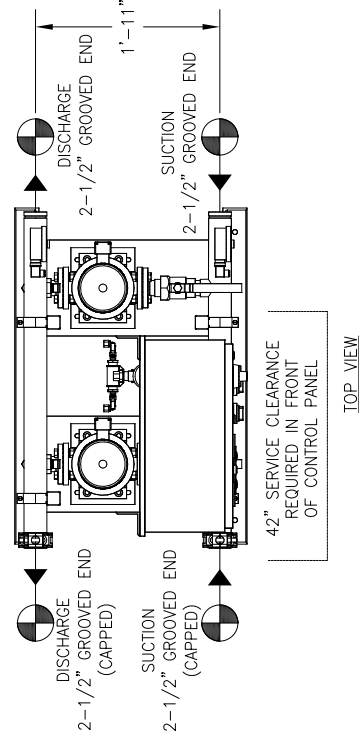
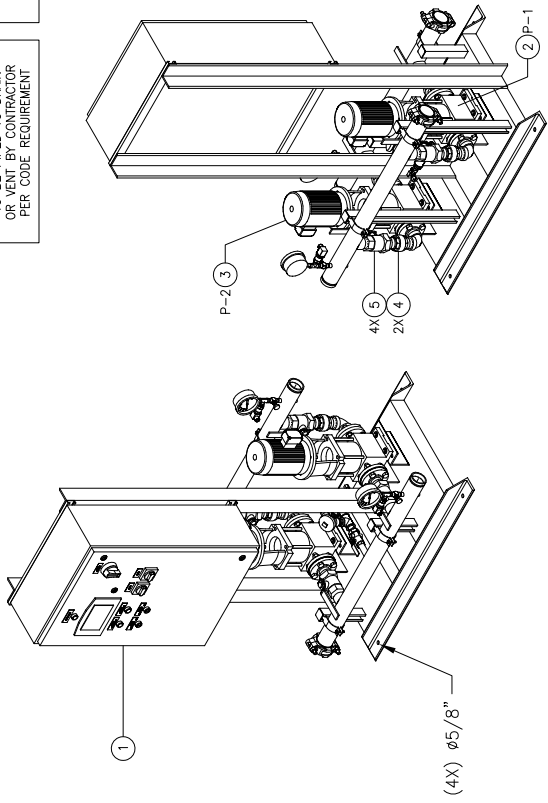


RELIEF VALVES AND ANCHORAGE EQUIPMENT DRAINS TO BE IN COMPLIANCE WITH LOCAL CODES AND ANY SEISMIC REQUIREMENTS.

RELIEF VALVES AND ANCHORAGE EQUIPMENT DRAINS TO BE PIPED TO DRAIN OR VENT BY CONTRACTOR PER CODE REQUIREMENT



CONSTRUCTION NOTES:
 1. SUCTION AND DISCHARGE HEADERS ARE GROOVED ON BOTH ENDS.
 2. END CAPS CAN BE PLACED ON EITHER END OF HEADERS.
 3. SYSTEM DESIGNED FOR INDOOR INSTALLATION.

TOTAL FLOW		- PSI		- PSI		- PSI			
TOTAL DISCHARGE PRESSURE		TOTAL SYSTEM CAPACITY		AVAILABLE PRESSURE					
3	P-2	GOULDS	ESV	5SVG-5	-	1 1/2	3500	H60 / 60 / 3	TEFC P.E.
2	P-1	GOULDS	ESV	5SVG-5	-	1 1/2	3500	H60 / 60 / 3	TEFC P.E.
ITEM	TAG	MANUFACTURER	SERIES	MODEL	GPM	TDH	HP	RPM	ENCLOSURE
PUMP SCHEDULE									
10	-	-	-	-	-	-	-	-	-
9	-	-	-	-	-	-	-	-	-
8	-	-	-	-	-	-	-	-	-
7	-	-	-	-	-	-	-	-	-
6	-	-	-	-	-	-	-	-	-
5	4	-	-	APOLLO SINGLE UNION BALL VALVE MODEL 70LF-307-01	-	1 1/2"	-	-	-
4	2	-	-	BONOMI IN-LINE CHECK VALVE	-	1 1/2"	-	-	-
3	1	P-2	GOULDS	ESV MULTI-STAGE PUMP MODEL 5SVG-5	-	-	-	-	-
2	1	P-1	GOULDS	ESV MULTI-STAGE PUMP MODEL 5SVG-5	-	-	-	-	-
1	1	-	-	AQUALOGIC XL CONTROL PANEL	-	-	-	-	-
ITEM	QTY	TAG	DESCRIPTION						

GENERAL NOTES:
 (1) SINGLE POINT POWER CONNECTION AT CONTROL PANEL.
 (2) HYDRO PRESSURE CHECK AT 125 PSI.
 (3) ASSEMBLED SYSTEM TO BE PAINTED WITH INDUSTRIAL MACHINE ENAMEL PRIOR TO SHIPMENT.

UL LISTED
 PACKAGED PUMPING SYSTEMS & HEAT TRANSFER SYSTEMS

APPROXIMATE SHIPPING WEIGHT: 700 LBS.
 APPROXIMATE OPERATING WEIGHT: 720 LBS.

FLOWTECH systems
 HAYWARD, CALIFORNIA

EQUIPMENT SCHEDULE

PROJECT NAME: _____
CUSTOMER: _____

DRAWN BY DATE: ACO 12/20/19
CHECKED BY APPROVED BY: _____

TOLERANCES UNLESS OTHERWISE SPECIFIED:
 DEC. .500" FRACTION 1/2" ANGLE 5" SCALE 1" = 1'-0"

DRAWING NO.: FMW2.1-1-XL
FAB NO.: _____
REVISIONS: REV 1