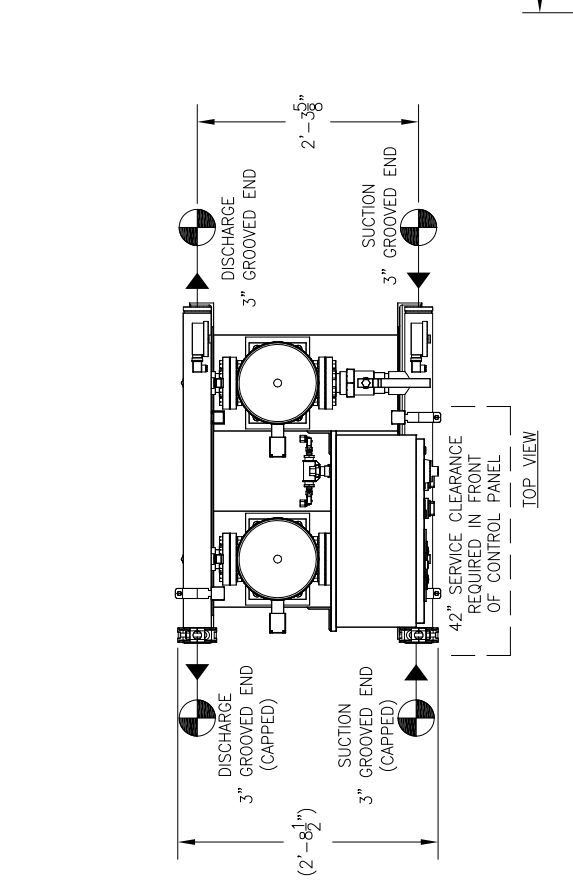
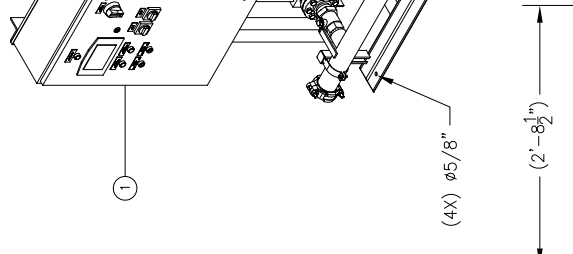


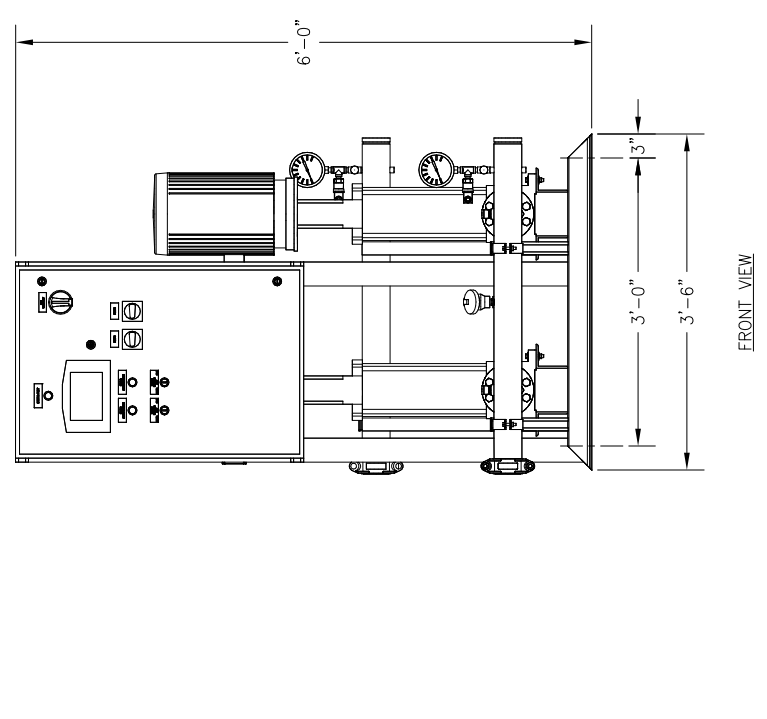
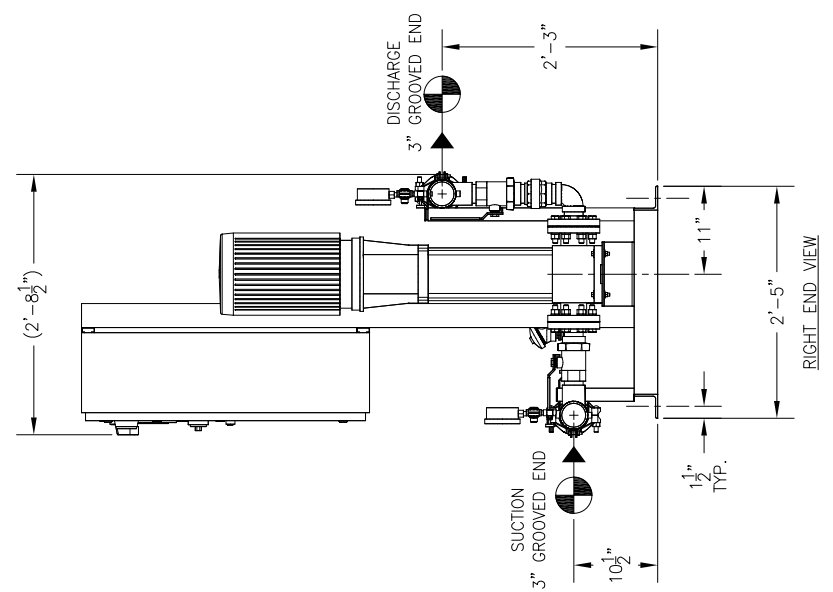
RELIEF VALVES AND EQUIPMENT DRAINS TO BE IN COMPLIANCE WITH LOCAL CODES AND ANY SEISMIC REQUIREMENTS.

ALL BOLTING AND ANCHORAGE TO BE IN COMPLIANCE WITH LOCAL CODES AND ANY SEISMIC REQUIREMENTS.



TOTAL FLOW		- PSI		- PSI		- PSI				
TOTAL DISCHARGE PRESSURE		TOTAL SYSTEM CAPACITY		AVAILABLE PRESSURE						
3	P-2	GOULDS	ESV	155VG-8	-	15	3500	460 / 60 / 3	TEFC P.E.	
2	P-1	GOULDS	ESV	155VG-8	-	15	3500	460 / 60 / 3	TEFC P.E.	
ITEM	TAG	MANUFACTURER	SERIES	MODEL	GPM	TDH	HP	RPM	VOLTS/4Z/PH	ENCLOSURE
PUMP SCHEDULE										
10	-	-	-	-	-	-	-	-	-	-
9	-	-	-	-	-	-	-	-	-	-
8	-	-	-	-	-	-	-	-	-	-
7	-	-	-	-	-	-	-	-	-	-
6	-	-	-	-	-	-	-	-	-	-
5	4	-	-	APOLLO SINGLE UNION BALL VALVE MODEL 70LF-308-01	-	2"	-	-	-	-
4	2	-	-	BONOMI IN-LINE CHECK VALVE	-	2"	-	-	-	-
3	1	P-2	GOULDS	ESV MULTI-STAGE PUMP MODEL 155VG-8	-	-	-	-	-	-
2	1	P-1	GOULDS	ESV MULTI-STAGE PUMP MODEL 155VG-8	-	-	-	-	-	-
1	1	-	-	AQUALOGIC XL CONTROL PANEL	-	-	-	-	-	-
ITEM	QTY	TAG	DESCRIPTION							

CONSTRUCTION NOTES:  
 1. SUCTION AND DISCHARGE HEADERS ARE GROOVED ON BOTH ENDS.  
 2. END CAPS CAN BE PLACED ON EITHER END OF HEADERS.  
 3. SYSTEM DESIGNED FOR INDOOR INSTALLATION.



**GENERAL NOTES:**  
 (1) SINGLE POINT POWER CONNECTION AT CONTROL PANEL.  
 (2) HYDRO PRESSURE CHECK AT 125 PSI.  
 (3) ASSEMBLED SYSTEM TO BE PAINTED WITH INDUSTRIAL MACHINE ENAMEL PRIOR TO SHIPMENT.

**UL LISTED**  
 PACKAGED PUMPING SYSTEMS & HEAT TRANSFER SYSTEMS

APPROXIMATE SHIPPING WEIGHT: 1,490 LBS.  
 APPROXIMATE OPERATING WEIGHT: 1,520 LBS.

**PROJECT NAME:** \_\_\_\_\_  
**CUSTOMER:** \_\_\_\_\_  
**DRAWN BY DATE:** ACD 9/12/19  
**CHECKED BY APPROVED BY:** \_\_\_\_\_  
**TOLERANCES UNLESS OTHERWISE SPECIFIED:**  
 DEC. .500" FRACTION 1/2" ANGLE 5" SCALE 1" = 1'-0"

**EQUIPMENT SCHEDULE**

**FLOWTECH systems**  
 HAYWARD, CALIFORNIA

DRAWING TITLE: FMW2.1-8-XL - VARIABLE SPEED DUPLEX PRESSURE BOOSTER  
 DRAWING NO. FMW2.1-8-XL  
 REV. 1